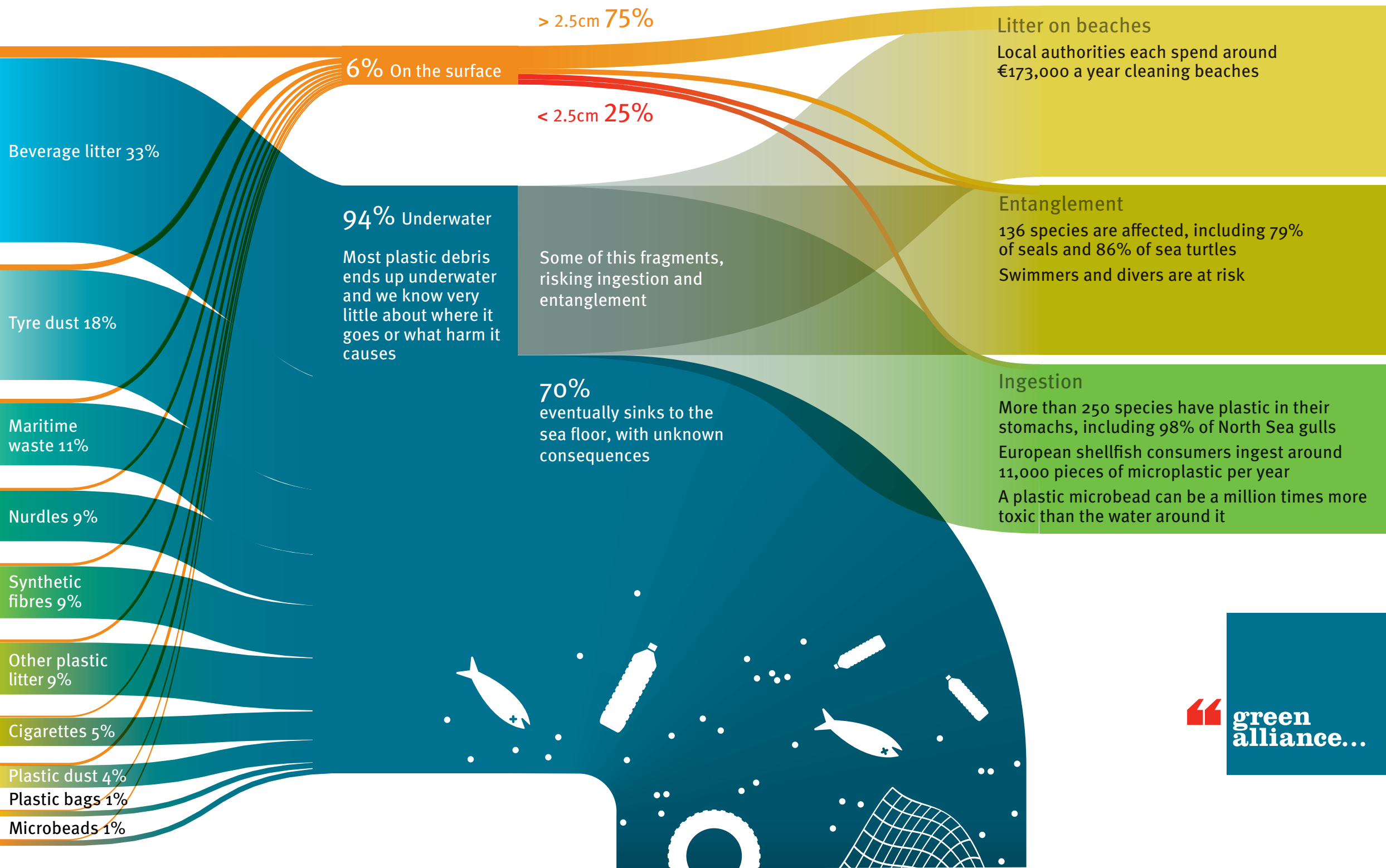
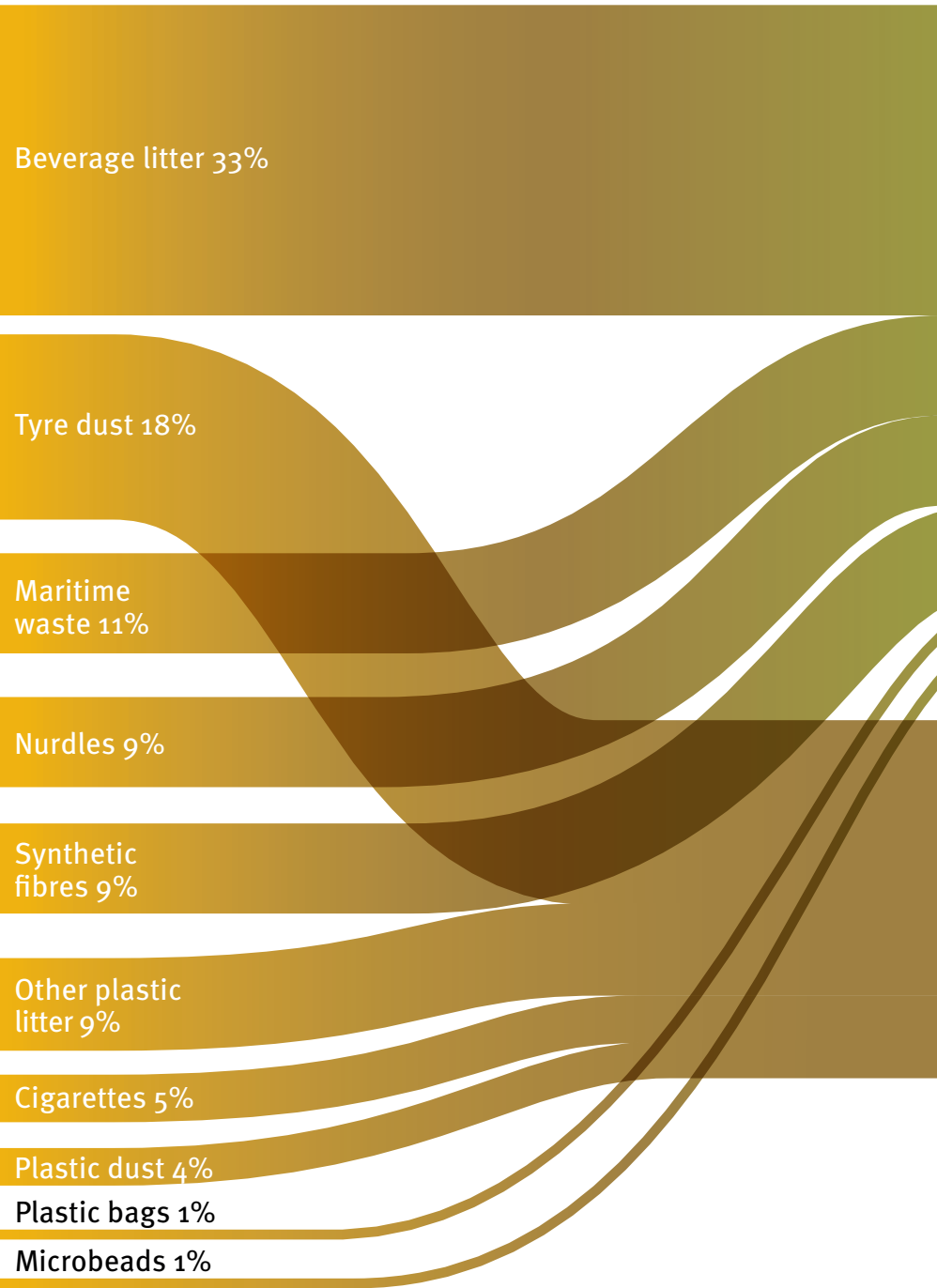


What happens to plastic in the sea?



How to stop nearly two thirds of plastic waste getting into the sea



These five actions would lead to a 60% drop in plastic entering the sea

Deposit return scheme

This would capture over 95% of used beverage containers

Enforce existing bans on maritime waste

Using the tools developed to enforce Norway's discards ban would cut maritime waste by 90%

Enforce Operation Clean Sweep

If mandatory, this industry initiative would stop plastic pellet pollution

Add sand traps to waste water treatment

These cut synthetic fibre waste by 85%

Ban microbeads in all products

This would end this source of pollution

Plastic and tyre dust, cigarettes, crisp packets and similar litter would need new policies